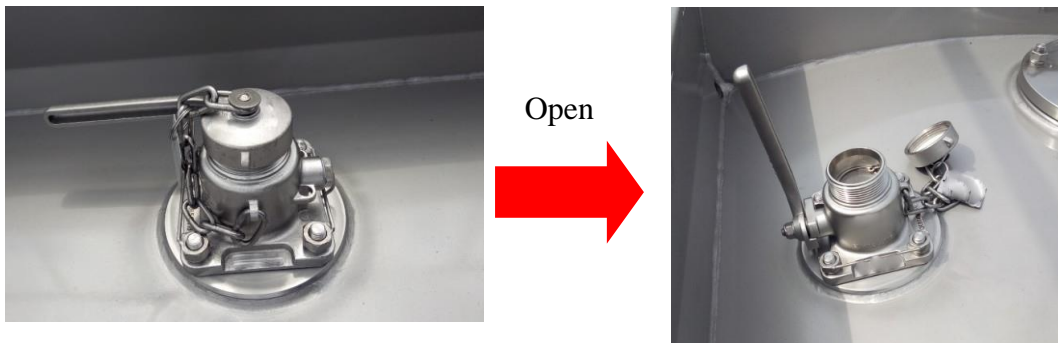


1. Unloading from Bottom Valve - Gravity discharge (without pressure)

1.1 Connect the earth grounding cable to earth plate.



1.2 Remove cap or blind flange or other cover of airline valve(the picture shows cap), for tank venting.



NOTE: For hazardous cargo or as per customers' requirement, the way of tank venting can be as follows:

1.2.1 Remove cap or blind flange or other cover of airline valve. Connect hose to airline valve for vapour return

1.2.2 Open airline valve and external valve on hose for vent the tank.

1.3 Remove bottom discharge dust cap or blind flange or other cover (the picture shows cap), connect outlet hose ensuring connection is correct and tight. Secure hose to prevent possible whiplash. Open external valve on hose.



1.4 For unloading, open internal foot valve, thereafter open external valve. Frequently check the unloading process.

1.5 When an emergency situation occurs during the product unloading, in the bottom valve assembly area or other life threatening situations, pull the emergency remote cable, to quickly close the internal valve.



1.6 When the discharge has been completed and the discharge hose is drained/empty. Close foot valve, thereafter close external valve.

1.7 Close external valve on the hose. Remove the hose and fit dust cap or blind flange or other cover and tighten.

1.8 Close airline valve. Fit cap or blind flange or other cover and retighten.

1.9 For hazardous cargo or as per customers' requirement, close external valve on airline hose and airline valve. Remove hose from tank. Fit cap and retighten.

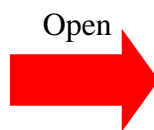
1.10 Remove the earth grounding cable from the earth plate.

2. Unloading from Bottom Valve - Pressure discharge

2.1 Connect the earth grounding cable to earth plate.



2.2 Remove cap or blind flange or other cover of airline valve (the picture shows cap), connect pressure hose to the valve ensuring connection is correct and tight.



2.3 Remove bottom discharge dust cap or blind flange or other cover, connect outlet hose ensuring connection is correct and tight. Secure hose to prevent possible whiplash. Open external valve on hose.



2.4 For unloading, open internal foot valve, thereafter open external valve. Frequently check the unloading process.

2.5 Open valve on airline hose. Supply pressure from airline hose for unloading. Pressure not to be greater than tank working pressure.

2.6 When an emergency situation occurs during the product unloading, in the bottom valve assembly area or other life threatening situations, pull the emergency remote cable, to quickly close the internal valve.



2.7 When the discharge has been completed and the hose line is drained/empty, stop supply pressure from airline valve. Close internal foot valve, thereafter close external valve.

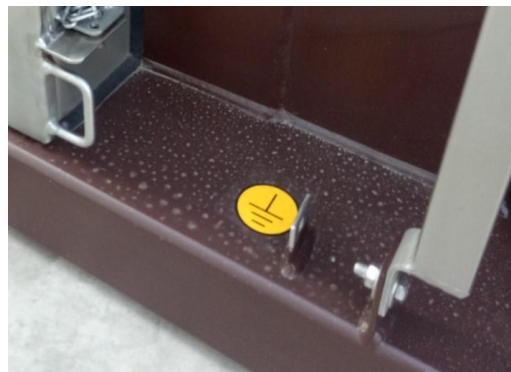
2.8 Close external valve on the hose. Remove the hose and fit dust cap or blind flange or other cover and tighten.

2.9 Close external valve on airline hose and airline valve. Remove hose from tank. Fit cap or blind flange or other cover and retighten.

2.10 Remove the earth grounding cable from the earth plate.

3. Unloading from Bottom Valve - Vacuum discharge

3.1 Connect the earth grounding cable to earth plate.



3.2 Remove cap or blind flange or other cover of airline valve(the picture shows cap), for tank venting.



Open
→



NOTE: For hazardous cargo or as per customers' requirement, the way of tank venting can be as follows:

3.2.1 Remove cap or blind flange or other cover of airline valve. Connect hose to airline valve for vent the tank

3.2.2 Open airline valve and external valve on hose for vent the tank.

3.3 Remove bottom discharge dust cap or blind flange or other cover(the picture shows cap), connect outlet hose ensuring connection is correct and tight. Secure hose to prevent possible whiplash. Open external valve on hose.



3.4 For unloading, open internal foot valve, thereafter open external valve. Frequently check the unloading process. For unloading, turn on the pump.

3.5 When an emergency situation occurs during the product unloading, in the bottom valve assembly area or other life threatening situations, pull the emergency remote cable, to quickly close the internal valve.



3.6 When the discharge has been completed and the discharge pipe is drained/empty, turn off the pump.

3.7 Close external valve on the hose. Remove the hose and fit dust cap or blind flange or other cover and tighten.

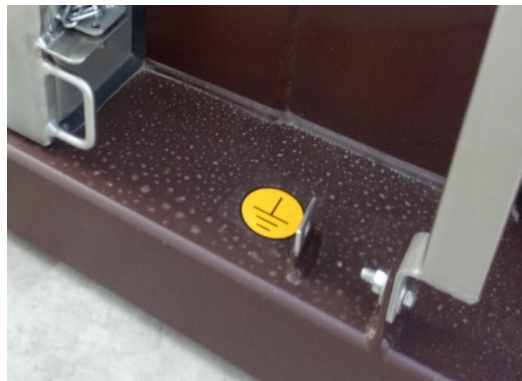
3.8 Close external valve on airline hose and airline valve. Remove hose from tank. Fit cap or blind flange or other cover and retighten.

3.9 For hazardous cargo or as per customers' requirement, close external valve on airline hose and airline valve. Remove hose from tank. Fit cap or blind flange or other cover and retighten.

3.10 Remove the earth grounding cable from the earth plate.

4. Unloading from Top Discharge - Vacuum discharge

4.1 Connect the earth grounding cable to earth plate.



4.2 Remove cap or blind flange or other cover of airline valve (the picture shows cap), for tank venting.



Open
→



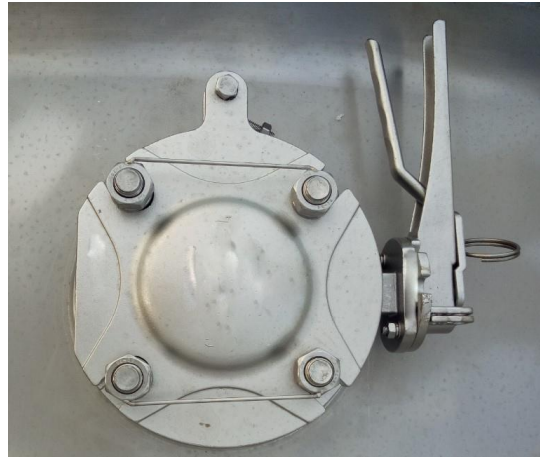
NOTE: For hazardous cargo or as per customers' requirement, the way of tank venting can be as follows:

4.2.1 Remove cap or blind flange or other cover of airline valve. Connect hose to airline valve for vent the tank.

4.2.2 Open airline valve and external valve on hose for vent the tank.

4.3 Remove top discharge blind flange or quick coupling or other cover (the picture shows blind flange), connect hose ensuring connection is correct and tight, secure hose to prevent possible whiplash.

4.4 Open airline valve and external valve on hose for vent the tank.



4.5 Open top discharge valve and external valve on hose for filling. Check the discharge process frequently. For unloading, turn on the pump.

4.6 When the discharge has been completed and the discharge pipe is drained/empty, turn off the pump.

4.7 Close the external valve on hose. Drain hose and close the top discharge valve and remove hose from tank. Fit blind flange or quick coupling or other cover and tighten the fastening bolts.

4.8 For hazardous cargo or as per customers' requirement, close external valve on airline hose and airline valve. Remove hose from tank. Fit cap or blind flange or other cover and retighten.

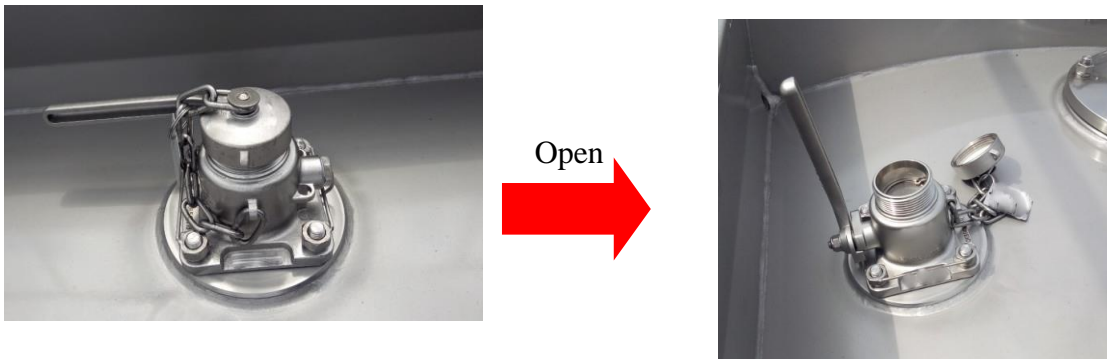
4.9 Remove the earth grounding cable from the earth plate.

5. Unloading from Top Discharge - Pressure Discharge

5.1 Connect the earth grounding cable to earth plate.



5.2 Remove cap or blind flange or other cover of airline valve (the picture shows cap). Connect hose to airline valve, ensuring connection is correct and tight. Open airline valve for supply pressure.



5.3 Remove top discharge blind flange or quick coupling or other cover (the picture shows blind flange). Connect hose ensuring connection is correct and tight. Secure hose to prevent possible whiplash.



5.4 Open top discharge valve and external valve on hose. Frequently check the discharge process. Supply pressure from airline hose for unloading. Pressure not to be greater than tank working pressure.

5.5 When the discharge has been completed and the discharge pipe is drained/empty. Stop supply pressure from airline valve.

5.6 Close the external valve on hose. Drain hose and close the top discharge valve and remove hose from tank. Fit blind flange or quick coupling or other cover and tighten the fastening bolts.

5.7 Close external valve on airline pipe and airline valve. Remove hose from tank. Fit cap or blind flange or other cover and retighten.

5.8 Remove the earth grounding cable from the earth plate.